

ULB100 Complete Kit

Series

ULB100
Cover Sheet

4" Wide Polymer Concrete Trench Drain Kit 3 - 99 Foot Complete



**Polymer Concrete Sloped Trench Drain Kit
Integrated Galvanized Steel Edge**

Complete Kit Includes:

Specified number of 1 meter sections of trench drain

Specified number of Galvanized Slot Drain Top with integrated locks

1 - Solid End Cap

1 - End Outlet

1-877-903-7246



www.trenchdrainsupply.com

| | |
|--|--|
| <p>Number</p> <p>R100Gxx</p> | <p>Series</p> <p>ULG100</p> <p>Trench Drain Channel MultiV100 - Galvanized Edge</p> |
| <div data-bbox="212 405 358 617"> </div> <div data-bbox="206 392 1455 1459"> <p>Optimized V-shaped section 5 3/8"</p> <p>4"</p> <p>3/4"</p> <p>Vertical outlet preform \varnothing 4 3/8"</p> <p>Groove for sealing joint</p> <p>3 1/2"</p> <p>39 3/8"</p> <p>Smooth galvanized edge of a real thickness of .0787" + .0787"</p> <p>8 locking points per linear meter</p> </div> | |
| <p>Manufacturer</p> | <p>Specification</p> <p>ULMA Linear Drainage Channel, type MULTIV+ R100G; Ext width 5 3/8" mm, Internal width 4" with overall heights between 4" and 11"; suitable for cascade-type slopes to collect rainwater; sections 39 3/8" length; optimized V-shape with self-cleaning effect; galvanized steel edges for lateral protection; Rapidlock® boltless system.</p> |
| <p>DISCLAIMER - The customer and the customer's architects, engineers, consultants, and other professionals are completely responsible for the selection installation and maintenance of any product purchased from Trench Drain Supply and/or its manufacturers. TRENCH DRAIN SUPPLY MAKES NO WARRANTY, EXPRESS OR IMPLIED, AS TO THE SUITABILITY, DESIGN, MERCHANTABILITY, OR FITNESS OF THE PRODUCT FOR CUSTOMERS APPLICATION. The drawing and information provided remain the property and copyright of the manufacturer listed. The manufacturer reserves the right to modify specification without notice.</p> | |

Number

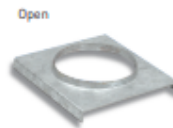
R100Gxx Dimensions

Series

ULG100

Trench Drain Channel

MultiV100 - Galvanized Edge



FAST, BOLTLESS SAFETY
LOCKING 8 fastening points
per linear meter.

rapidlock®

Manufacturer



MULTIV+100

| Channel reference: | Total height | | Internal height | | Hydraulic section (in ²) | Ø outlet(mm) | |
|--------------------|--------------|--------|-----------------|--------|--------------------------------------|--------------|--------|
| | h (in) | H (in) | a (in) | b (in) | | Vert. | Horiz. |
| R100G00R | 3.94 | 3.94 | 2.44 | 2.44 | 08.68 | 110 | - |
| R100G01 | 3.94 | 4.13 | 2.44 | 2.63 | 09.44 | 110 | - |
| R100G02 | 4.13 | 4.33 | 2.63 | 2.83 | 09.97 | 110 | - |
| R100G03 | 4.33 | 4.53 | 2.83 | 3.03 | 10.49 | 110 | - |
| R100G04 | 4.53 | 4.72 | 3.03 | 3.23 | 11.02 | 110 | - |
| R100G05 | 4.72 | 4.92 | 3.23 | 3.43 | 11.55 | 110 | - |
| R100G06 | 4.92 | 5.12 | 3.43 | 3.62 | 12.07 | 110 | - |
| R100G07 | 5.12 | 5.31 | 3.62 | 3.82 | 12.60 | 110 | - |
| R100G08 | 5.31 | 5.51 | 3.82 | 4.02 | 13.13 | 110 | - |
| R100G09 | 5.51 | 5.71 | 4.02 | 4.21 | 13.66 | 110 | - |
| R100G10 | 5.71 | 5.91 | 4.21 | 4.41 | 14.18 | 110 | - |
| R100G10R | 5.91 | 5.91 | 4.41 | 4.41 | 14.18 | 110 | - |
| R100G11 | 5.91 | 6.10 | 4.41 | 4.61 | 14.96 | 110 | - |
| R100G12 | 6.10 | 6.30 | 4.61 | 4.80 | 15.59 | 110 | - |
| R100G13 | 6.30 | 6.49 | 4.80 | 5.00 | 16.21 | 110 | - |
| R100G14 | 6.49 | 6.69 | 5.00 | 5.20 | 16.85 | 110 | - |
| R100G15 | 6.69 | 6.89 | 5.20 | 5.39 | 17.47 | 110 | - |
| R100G16 | 6.89 | 7.09 | 5.39 | 5.59 | 18.11 | 110 | - |
| R100G17 | 7.09 | 7.28 | 5.59 | 5.79 | 18.72 | 110 | - |
| R100G18 | 7.28 | 7.48 | 5.79 | 5.98 | 19.69 | 110 | - |
| R100G19 | 7.48 | 7.68 | 5.98 | 6.18 | 19.98 | 110 | - |
| R100G20 | 7.68 | 7.87 | 6.18 | 6.38 | 20.62 | 110 | - |
| R100G20R | 7.87 | 7.87 | 6.38 | 6.38 | 20.62 | 110 | - |
| R100G21 | 7.87 | 8.07 | 6.38 | 6.58 | 21.28 | 110 | - |
| R100G22 | 8.07 | 8.27 | 6.58 | 6.77 | 21.95 | 110 | - |
| R100G23 | 8.27 | 8.46 | 6.77 | 6.97 | 22.61 | 110 | - |
| R100G24 | 8.46 | 8.66 | 6.97 | 7.16 | 23.28 | 110 | - |
| R100G25 | 8.66 | 8.86 | 7.16 | 7.37 | 23.95 | 110 | - |
| R100G26 | 8.86 | 9.06 | 7.37 | 7.56 | 24.61 | 110 | - |
| R100G27 | 9.06 | 9.25 | 7.56 | 7.76 | 25.28 | 110 | - |
| R100G28 | 9.25 | 9.45 | 7.76 | 7.95 | 25.95 | 110 | - |
| R100G29 | 9.45 | 9.65 | 7.95 | 8.15 | 26.61 | 110 | - |
| R100G30 | 9.65 | 9.84 | 8.15 | 8.35 | 27.78 | 110 | - |
| R100G30R | 9.84 | 9.84 | 8.35 | 8.35 | 27.78 | 110 | - |
| R100G40R | 11.81 | 11.81 | 10.31 | 10.31 | 34.10 | 110 | - |

Manufacturer



Specification

ULMA Linear Drainage Channel, type MULTIV+ R100G; Ext width 5 3/8" mm, Internal width 4" with overall heights between 4" and 11"; suitable for cascade-type slopes to collect rainwater; sections 39 3/8" length; optimized V-shape with self-cleaning effect; galvanized steel edges for lateral protection; Rapidlock® boltless system.

DISCLAIMER - The customer and the customer's architects, engineers, consultants, and other professionals are completely responsible for the selection installation and maintenance of any product purchased from Trench Drain Supply and/or its manufacturers. TRENCH DRAIN SUPPLY MAKES NO WARRANTY, EXPRESS OR IMPLIED, AS TO THE SUITABILITY, DESIGN, MERCHANTABILITY, OR FITNESS OF THE PRODUCT FOR CUSTOMERS APPLICATION. The drawing and information provided remain the property and copyright of the manufacturer listed. The manufacturer reserves the right to modify specification without notice.

1-877-903-7246

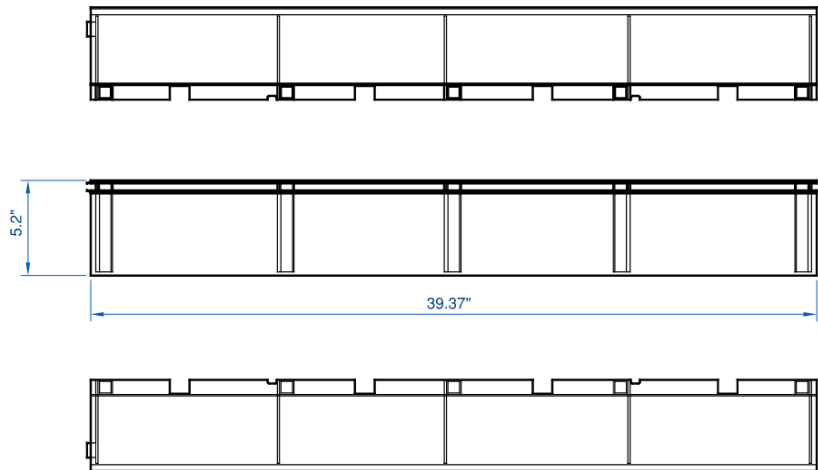
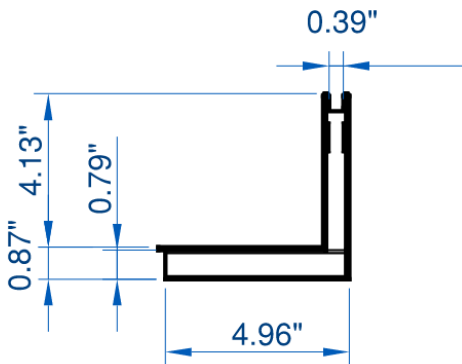



www.trenchdrainsupply.com

| | |
|----------------------------|--|
| Number GRL100ROD | Series ULG100 & ULB100 D Galvanized Single Slot |
|----------------------------|--|








| <u>PART NUMBER</u> | <u>DIMENSIONS</u> | <u>FREE AREA</u> |
|--------------------|-------------------|------------------|
| GRL100ROD | 39.37" [1000MM] | 15.2 SQ. IN. |



| | |
|--|---|
| Manufacturer  | Specification ULMA GRL100ROD GALVANIZED SINGLE SLOT TRENCH DRAIN GRATE WITH CLASS UP TO D LOAD RATING (89,920 LBS), SUPPLIED BY TRENCH DRAIN SUPPLY |
|--|---|

DISCLAIMER - The customer and the customer's architects, engineers, consultants, and other professionals are completely responsible for the selection installation and maintenance of any product purchased from Trench Drain Supply and/or its manufacturers. TRENCH DRAIN SUPPLY MAKES NO WARRANTY, EXPRESS OR IMPLIED, AS TO THE SUITABILITY, DESIGN, MERCHANTABILITY, OR FITNESS OF THE PRODUCT FOR CUSTOMERS APPLICATION. The drawing and information provided remain the property and copyright of the manufacturer listed. The manufacturer reserves the right to modify specification without notice.

| <div>Number</div> <div>MultiV100</div> | <div>Series</div> <div>MultiV100</div> <div>End Caps and Installation Device</div> | | | | | | |
|--|--|-----------------|-----------------|---------------|------|-------|--|
| <div></div> <table><tr><th>End Outlet</th><th>Min Height (in)</th><th>Max Height (in)</th></tr><tr><td>TUNIR100GC-xx</td><td>3.94</td><td>11.81</td></tr></table> | End Outlet | Min Height (in) | Max Height (in) | TUNIR100GC-xx | 3.94 | 11.81 | |
| End Outlet | Min Height (in) | Max Height (in) | | | | | |
| TUNIR100GC-xx | 3.94 | 11.81 | | | | | |
| <div></div> <table><tr><th>Closed End cap</th><th>Min Height (in)</th><th>Max Height (in)</th></tr><tr><td>TUNIR100GA-xx</td><td>3.94</td><td>11.81</td></tr></table> | Closed End cap | Min Height (in) | Max Height (in) | TUNIR100GA-xx | 3.94 | 11.81 | |
| Closed End cap | Min Height (in) | Max Height (in) | | | | | |
| TUNIR100GA-xx | 3.94 | 11.81 | | | | | |
| <div></div> <table><tr><th>Composite End Cap</th><th>Min Height (in)</th><th>Max Height (in)</th></tr><tr><td>TUNIR100</td><td>3.94</td><td>11.81</td></tr></table> | Composite End Cap | Min Height (in) | Max Height (in) | TUNIR100 | 3.94 | 11.81 | |
| Composite End Cap | Min Height (in) | Max Height (in) | | | | | |
| TUNIR100 | 3.94 | 11.81 | | | | | |
| <div></div> <div><div>ID100</div><div>Installation device for the MultiV100 Series trench drains</div></div> | | | | | | | |
| <div>Manufacturer</div> <div></div> | <div>Specification</div> <div>ULMA MultiV100 Accessories SUPPLIED BY TRENCH DRAIN SUPPLY</div> | | | | | | |
| <div>DISCLAIMER - The customer and the customer's architects, engineers, consultants, and other professionals are completely responsible for the selection installation and maintenance of any product purchased from Trench Drain Supply and/or its manufacturers. TRENCH DRAIN SUPPLY MAKES NO WARRANTY, EXPRESS OR IMPLIED, AS TO THE SUITABILITY, DESIGN, MERCHANTABILITY, OR FITNESS OF THE PRODUCT FOR CUSTOMERS APPLICATION. The drawing and information provided remain the property and copyright of the manufacturer listed. The manufacturer reserves the right to modify specification without notice.</div> | | | | | | | |

1-877-903-7246

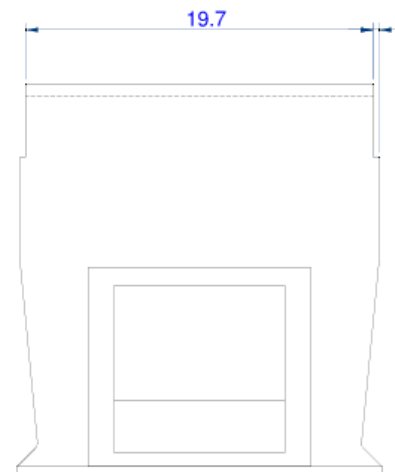
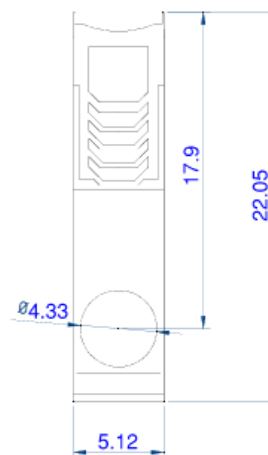
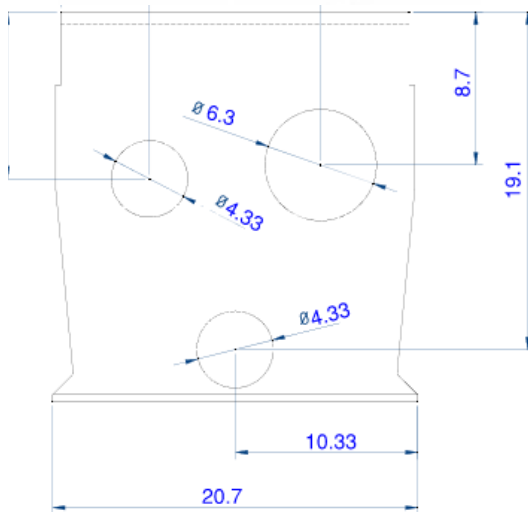



www.trenchdrainsupply.com

| | |
|--------------|--|
| Number | Series |
| AK100 | ULB100 Galvanized edge Access Unit |



| PART NUMBER | DIMENSIONS |
|-------------|----------------|
| AK100 | 22.05" [560MM] |



| | |
|---|--|
| Manufacturer | Specification |
|  | ULMA AK100 GALVANIZED EDGE POLYMER CONCRETE ACCESS UNIT SUPPLIED BY TRENCH DRAIN SUPPLY |

DISCLAIMER - The customer and the customer's architects, engineers, consultants, and other professionals are completely responsible for the selection installation and maintenance of any product purchased from Trench Drain Supply and/or its manufacturers. TRENCH DRAIN SUPPLY MAKES NO WARRANTY, EXPRESS OR IMPLIED, AS TO THE SUITABILITY, DESIGN, MERCHANTABILITY, OR FITNESS OF THE PRODUCT FOR CUSTOMERS APPLICATION. The drawing and information provided remain the property and copyright of the manufacturer listed. The manufacturer reserves the right to modify specification without notice.